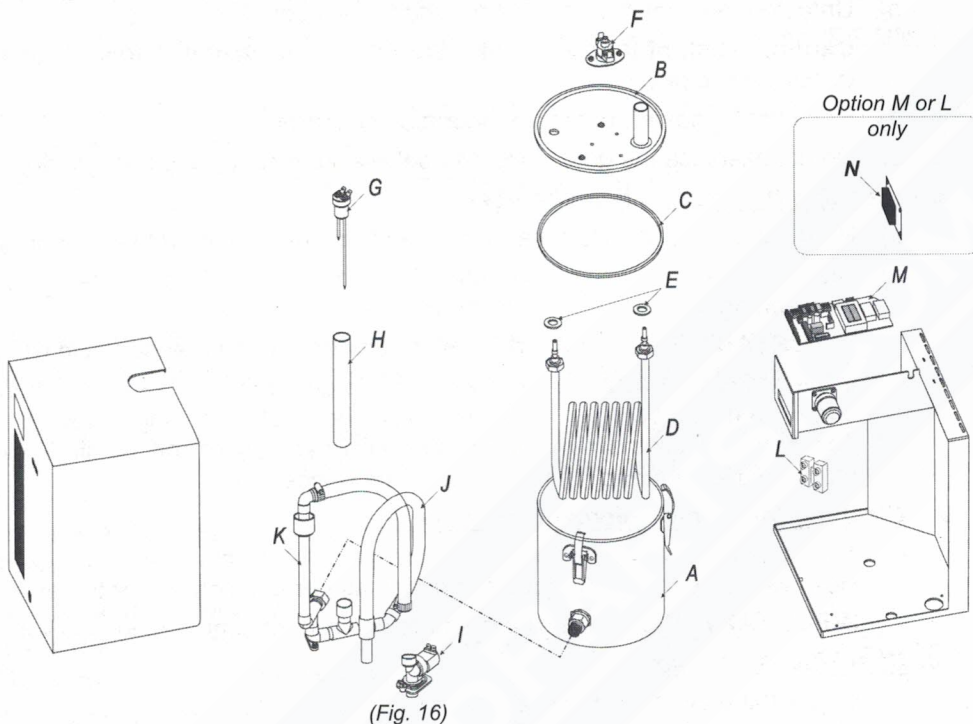




15. Exploded View and Bill of Material

15.1. Exploded view



(Fig. 16)

15.2. Bill of Material

Item	Description	Model	Part number
<b>A</b>	Evaporation chamber cylinder	SKR-14 / 25 / 30 / 40	SW SKRCONT-ASSY
<b>B</b>	Evaporation chamber cover	SKR-14 / 25	SP 9011
		SKR-30 / 40	SP 9012-M
<b>C</b>	Evaporation chamber gasket	SKR-14 / 25 / 30 / 40	SP 9030
<b>D</b>	Heating element	SKR-14	SE 5990
		SKR-25	SE 5991
		SKR-30	SE 5992
		SKR-40	SE 5993
<b>E</b>	Heating element gasket	SKR-14 / 25 / 30 / 40	SP 1005
<b>F</b>	High temperature switch	SKR-14 / 25 / 30 / 40	SP 3035
<b>G</b>	Water level sensor assembly	SKR-14 / 25 / 30 / 40	SW SKRLEV-ASSY
<b>H</b>	Water level sensor tube	SKR-14 / 25 / 30 / 40	SP 1025
<b>I</b>	Water fill valve	SKR-14 / 25 / 30 / 40	SP 6004
<b>J</b>	Drain pipe assembly	SKR-14 / 25 / 30 / 40	SW SKRDRAIN-ASSY
<b>K</b>	Main plumbing assembly	SKR-14 / 25 / 30 / 40	SW SKRPIPE-ASSY
<b>L</b>	Terminal block	SKR-14 / 25 / 30 / 40	SP 9046
<b>M</b>	Main PC board – ON/OFF	SKR-14	NW SKR120MAIN-NSS
		SKR-25 / 30 / 40	NW SKR240MAIN-NSS
	Main PC board – Modulating	SKR-14M	NW SKR120-M-NSS
		SKR-25M / 30M / 40M	NW SKR240-M-NSS
<b>N</b>	SKR-TRIAC PC board (option M)	SKR-14M / 25M / 30M	NW SKRET-2SS
		SKR-40M	NW SKRET-3SS
	SKR-TRIAC PC board (option L or ML)	SKR-14 / 25 / 30	NW SKRL-2SS
		SKR-40	NW SKRL-3SS